

Bale Moisture Monitor

What is the Bale Moisture Monitor?

The Lummus Bale Moisture Monitor is a lint moisture measurement system for cotton bales that offers consistency and accuracy far superior to any other system available on the market.

The Bale Moisture Monitor utilizes well-proven basic cotton compression algorithms to arrive at very accurate bale moisture data.

Common, off-the-shelf electronic components are utilized to reduce cost and insure that replacement components will be available in the future.

Data collected during the bale compression is utilized to calculate the bale moisture content to an accuracy of better than +/- 0.4%.

Bale number, weight, and moisture are displayed on a touch-screen display. The display is housed in a stainless steel enclosure (top photo), complete with articulating mount arm (middle photo). This assembly can be mounted to any convenient surface or cabinet. Typical location is on the side of the bale press console. Operators utilize the bale weight information to monitor/adjust bale weight set point and use the moisture information to monitor/adjust moisture restoration equipment. A 4-20 mA analog output signal that is directly proportional to the 4-20% bale moisture is available to automate the bale moisture restoration equipment operation.

The Bale Moisture Monitor can be installed on any make or model of bale press. The installation of a pressure transducer and photocell (both provided) is all that is necessary for the system to be added to the bale press. The bale scale must have an available RS-232 port set up for continuous streaming data.

All set-up parameters required to adapt the system to a specific bale press are accessible via the operator touch-screen.

Calibration is simple and also accessible through the operator touch-screen.

Disclaimer

The Lummus Bale Moisture Monitor provides a moisture reading that is essentially the average moisture content within a bale. The uniformity of moisture content within a bale can vary greatly, depending on the type of moisture restoration system used. No representation is made or implied that the Lummus Bale Moisture Monitor provides a certified moisture content for a specific bale or that the moisture content within a specific bale is completely uniform.

Benefits:

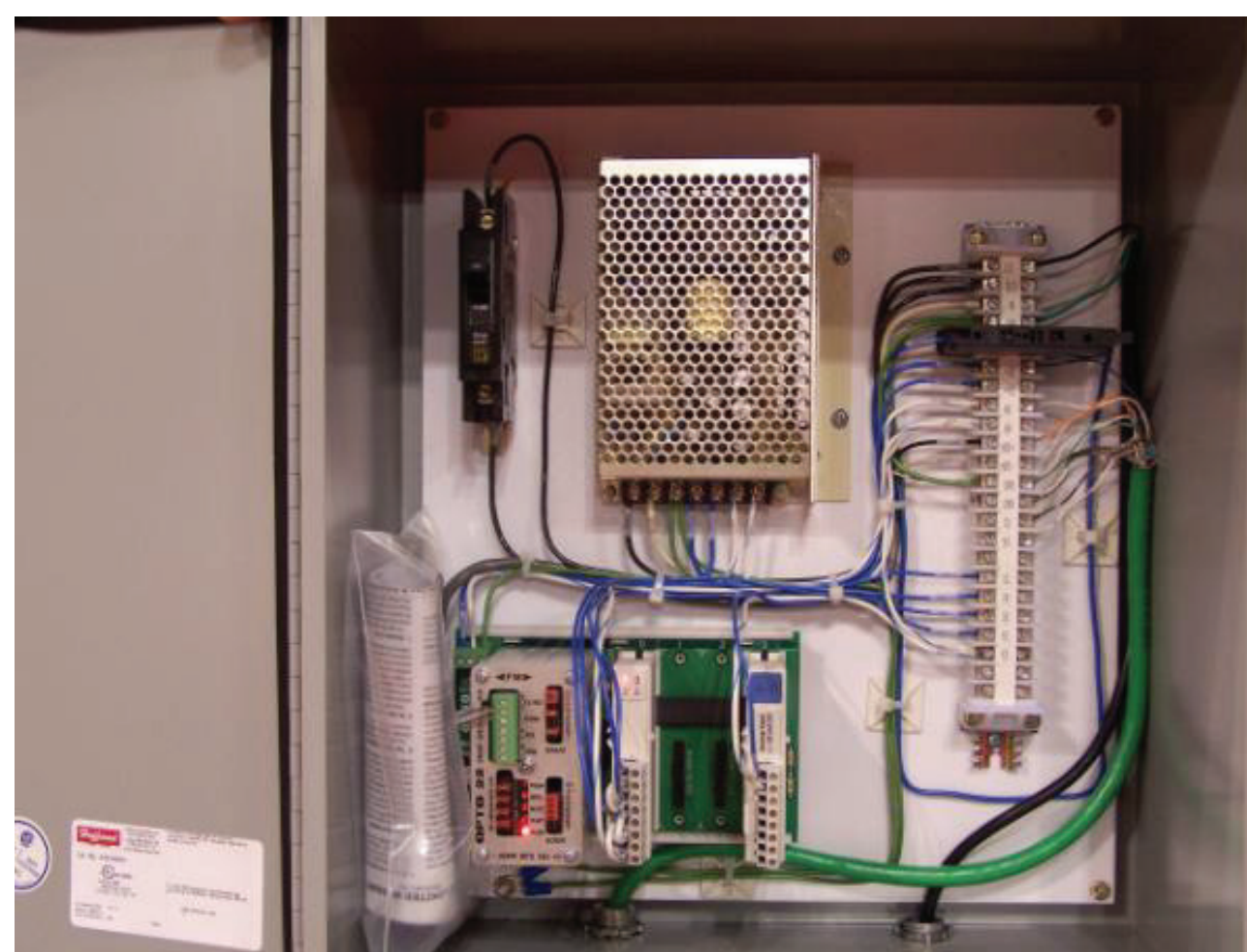
- Increased accuracy
- Simple installation and set-up
- Off-the-shelf components
- Works with any make/model of press



Bale Moisture Monitor Operator Interface



Articulating Mount Arm Assembly



Interior of Junction Box for Bale Moisture Monitor



Physical Address: 225 Bourne Boulevard • Savannah, Georgia 31408-9586 USA
Mailing Address: P. O. Box 929 • Pooler, Georgia 31322-0929 USA
Phone: (912) 447-9000 • Fax: (912) 447-9250
Toll Free (USA Only): **1-800-4LUMMUS** (1-800-458-6687)
Web Site: www.lummus.com • E-mail: lummus.sales@lummus.com



Lummus products described or listed in this publication are illustrative only. Application and use of these products must be in accordance with the applicable codes and regulations and must be arranged and/or provided with covers and other guards where necessary to assure the safety of personnel. Lummus engineers continue to make improvements. All designs, specifications, and ratings are subject to change without notice.