

# Version 2.0 Gas-Fired Burners

## What are the Version 2.0 Burners?

The Version 2.0 line of Lummus gas-fired burners is an all-new platform of product, featuring human/machine interfaces (HMI's) and gas trains with more capabilities and performance than anything previously available. When integrated with the new Lummus Moisture Control System, these burners can perform to a level of efficiency that is second to none. This allows these burners to be a pivotal component for improved gin plant moisture control systems in any existing or all-new gin plant.

## Benefits:

- Improved energy efficiency through precise control and high turn-down ratios (using only as much gas as required for proper drying).
- Ease of operation through totally redesigned HMI screens.
- Latest off-the-shelf components throughout the design.
- 24/7 Technical Service and Support available.
- Can be used with any manufacturer's drying system.
- Offers a level of value and performance previously not available.

## Features:

- Available in 5 MBTU/HR and 8 MBTU/HR models, which can be used for either push-type or pull-type applications.
- 1 MBTU/HR Model with Integral Blower (sometimes referred to as a "pony" burner) is available for use as a dry, hot air source in moisture restoration applications or wherever a small influx of hot air is required.
- Burners work with either LP or natural gas.
- High-speed Gas Valves (twice as fast as previous models).
- New HMI Controls (easier to read and more user-friendly).
- Proportional-Integral-Derivative (PID) control available on the HMI (configurable to allow for precise "feed-forward" and "feed-back" control when used with the Lummus Moisture Control System).
- Schematic wiring diagrams available on the HMI touch-screen.
- Complete documentation (including a Testing and Commissioning Manual).

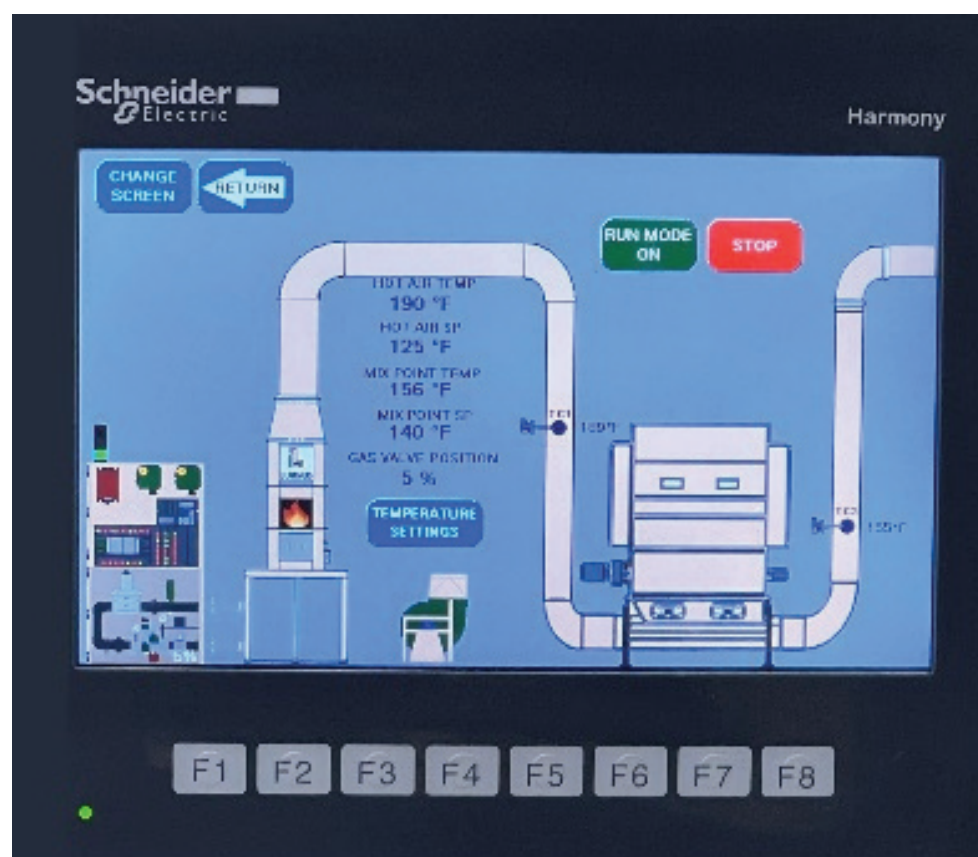


Push-Type



Pull-Type

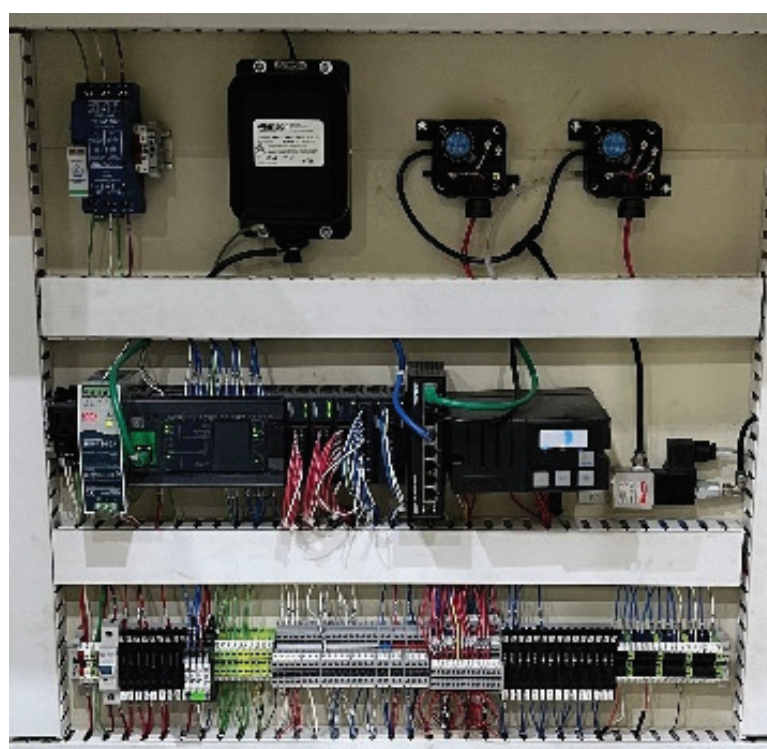
Version 2.0 Gas-Fired Burners (8 MBTU/HR models shown)



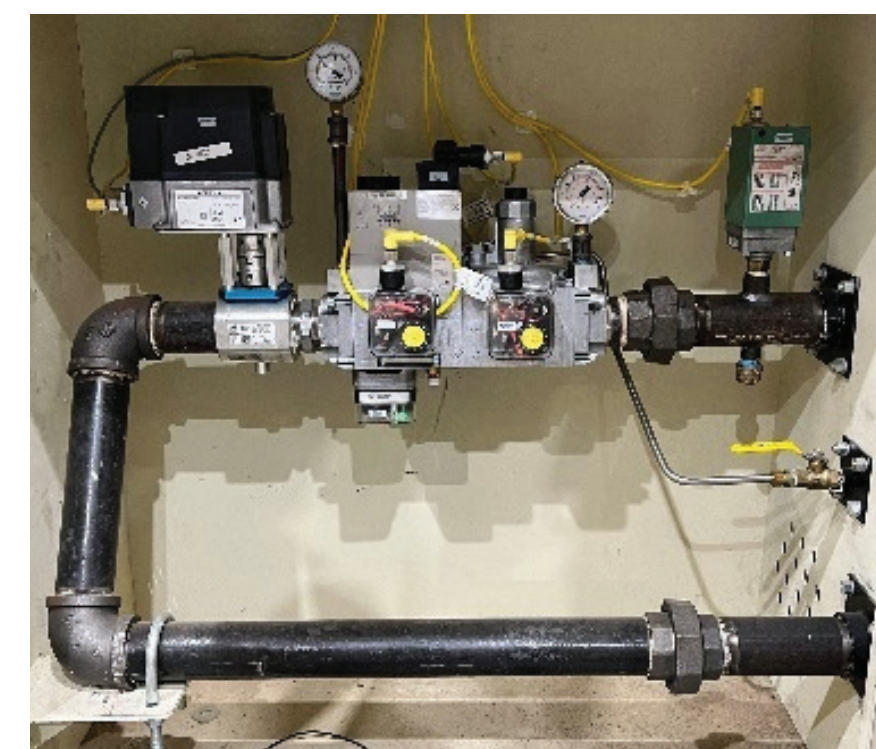
Version 2.0 Burner HMI



1 MBTU/HR Version 2.0 Burner/Blower



Control Panel



Gas Train

Version 2.0 Burner Controls



Physical Address: 225 Bourne Boulevard • Savannah, Georgia 31408-9586 USA  
 Mailing Address: P. O. Box 929 • Pooler, Georgia 31322-0929 USA  
 Phone: (912) 447-9000 • Fax: (912) 447-9250  
 Toll Free (USA Only): 1-800-4LUMMUS (1-800-458-6687)  
 Web Site: www.lummus.com • E-mail: lummus.sales@lummus.com



Lummus products described or listed in this publication are illustrative only. Application and use of these products must be in accordance with the applicable codes and regulations and must be arranged and/or provided with covers and other guards where necessary to assure the safety of personnel. Lummus engineers continue to make improvements. All designs, specifications, and ratings are subject to change without notice.