

# Lummus Moisture Control System

## What is the Moisture Control System?

The Lummus Moisture Controls System provides a state-of-the-art answer to the industry need for a reliable product that can measure either seed cotton or lint cotton moisture contents. More importantly, it allows the control of ancillary components (burners or moisture units) to modulate (as required) in order to maintain proper moisture content for efficient processing. Through the latest technology, this system provides both “feed-forward” (anticipatory) burner adjustment (based on incoming moisture content) and “feed-back” information to facilitate true closed-loop system control, which optimizes performance and fuel efficiency.

## Benefits:

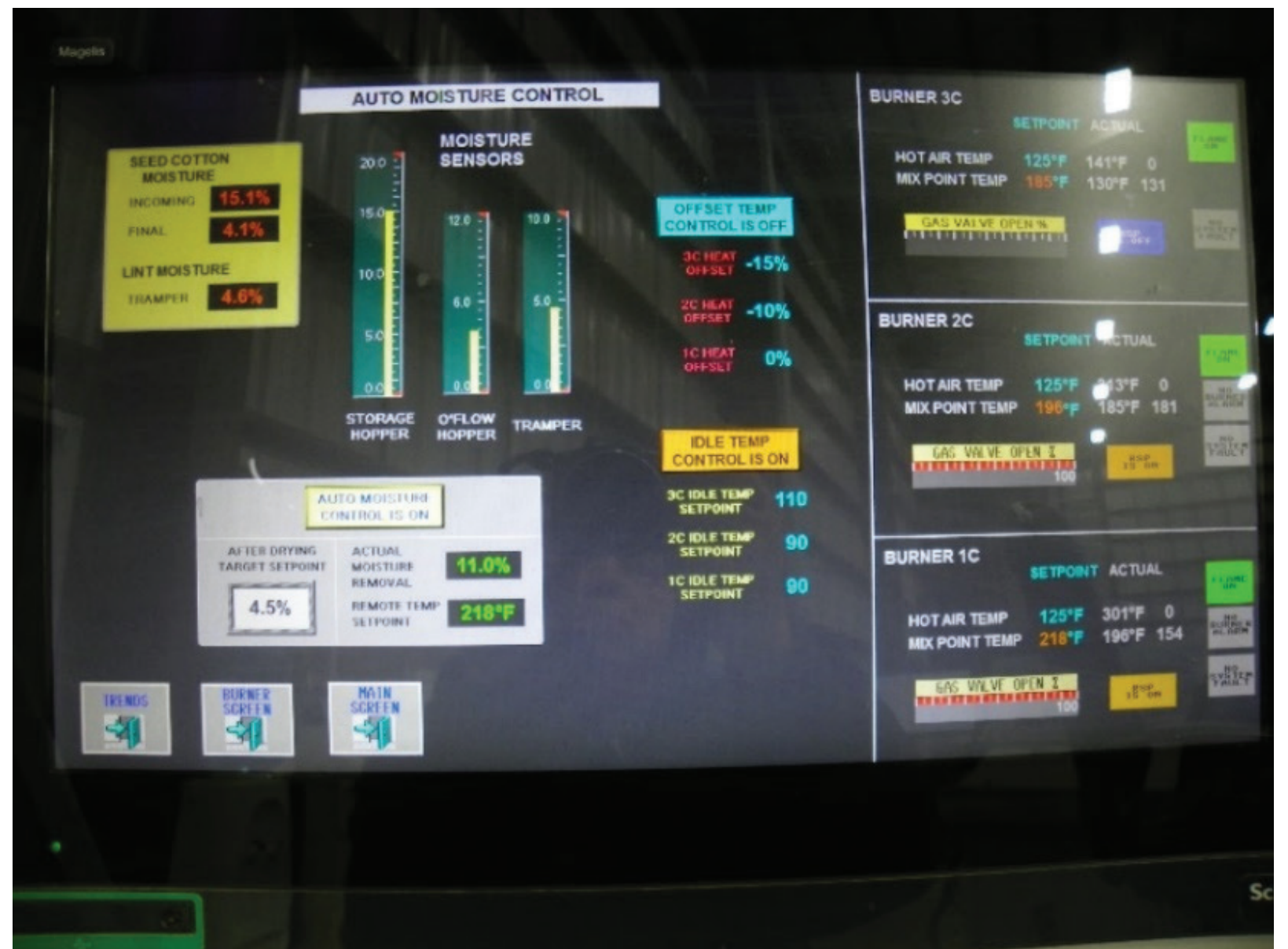
- Gives the operator control to maximize efficiency, while reducing fuel consumption.
- Provides true “closed-loop” moisture measurement/control when furnished with the Lummus Version 2.0 Burners.
- Unrivalled accuracy through best-in-class calibration.
- Ability to bias first, second, and subsequent stages of burners to enhance drying system efficiency.

## Features:

- Incoming Moisture Sensor is typically located in the Storage Hopper (other locations can be used), while Final Moisture Sensor is located in the Overflow Hopper.
- Sensors are calibrated at the factory to ensure accurate moisture measurement.
- Allows burner operation in either automatic or manual mode.
- Constant readout of Incoming and Final moisture.
- Illustrates gas valve percentage open.
- System automatically brings burners to “idle” when not ginning.

## Items included with each system:

- Moisture Sensors with 50m of tri-axial cable for connection to hub.
- Sensor Hub, housed in sealed enclosure.
- Calibration Interface, housed in sealed enclosure.
- 15” Human/Machine Interface (HMI) touch-screen.
- Installation and Commissioning.



Moisture Control System HMI



System Sensor Hub



System Calibration Screen



Moisture Sensor (left) inside Storage Hopper and Rear View of Moisture Sensor (right) on Overflow Hopper



Physical Address: 225 Bourne Boulevard • Savannah, Georgia 31408-9586 USA  
Mailing Address: P. O. Box 929 • Pooler, Georgia 31322-0929 USA  
Phone: (912) 447-9000 • Fax: (912) 447-9250  
Toll Free (USA Only): 1-800-4LUMMUS (1-800-458-6687)  
Web Site: www.lummus.com • E-mail: lummus.sales@lummus.com



Lummus products described or listed in this publication are illustrative only. Application and use of these products must be in accordance with the applicable codes and regulations and must be arranged and/or provided with covers and other guards where necessary to assure the safety of personnel. Lummus engineers continue to make improvements. All designs, specifications, and ratings are subject to change without notice.