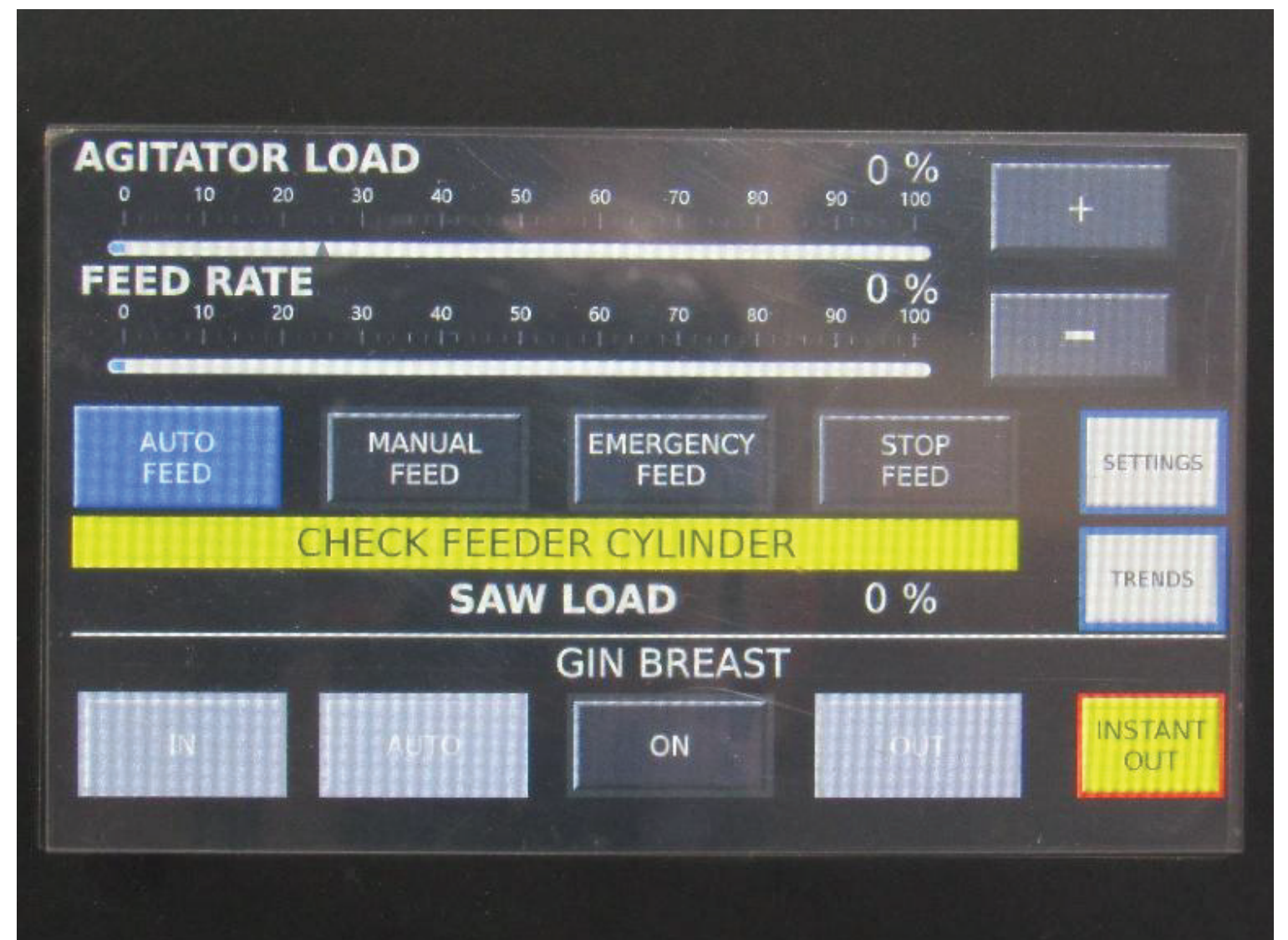


DGC 2020 Digital Gin/Feeder Controls



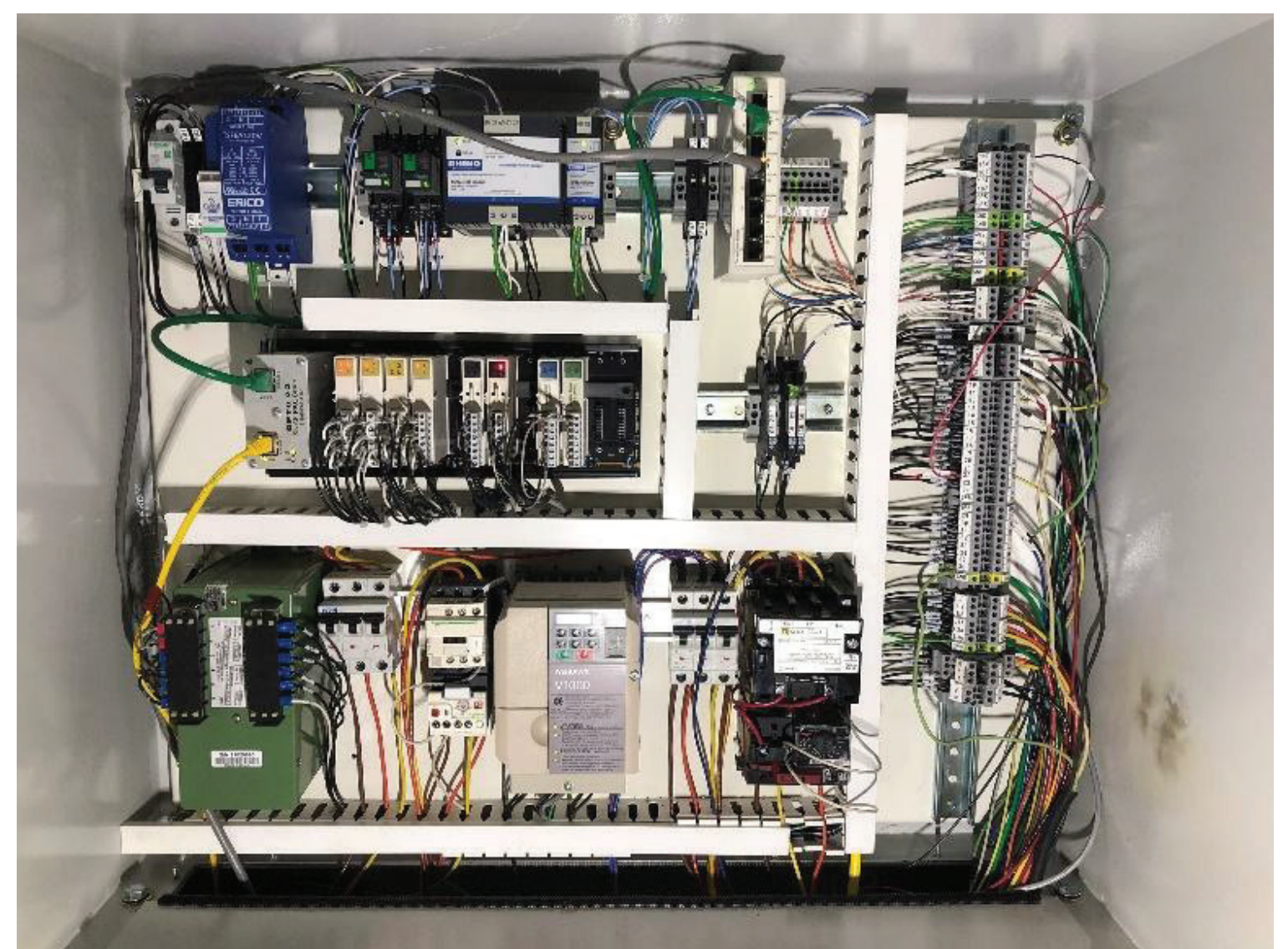
DGC 2020 Digital Gin/Feeder Controls Operator Interface



DGC 2020 Digital Gin/Feeder Controls Touch-Screen Display



DGC 2020 Gin/Feeder Controls Operator Interface Conversion



Panel Assembly for DGC 2020 Digital Gin/Feeder Controls

Making the best even better....

Lummus DGC 2020 Digital Gin/Feeder Controls are the latest in a succession of quality upgrades for Lummus gins.

Furnished as standard equipment on current-model Lummus Imperial III and Consolidated saw gins, these controls can be retrofitted to most older-model Lummus and Consolidated gin stands as well.

For installations that are operating the monochrome Series 2000 Digital Gin/Feeder Controls, a lower-cost DGC 2020 Operator Interface Terminal (OIT) upgrade is available (lower left photo).

The DGC 2020 Gin/Feeder Controls utilize proprietary software to monitor the load on the gin's agitator motor and the gin's main drive motor to modulate the extractor feeder's feed rollers to maintain a pre-set seed roll density, while guarding against overloading the main drive.

DGC 2020 Gin /Feeder Controls offer easy setting of parameters, including multiple languages:

English • French • Spanish • Portuguese • Russian

An operator interface enclosure (upper left) featuring a touch-screen display (upper right) is mounted either on an articulating mount arm on the extractor feeder or directly to the gin guard.

The panel assembly (lower right) is mounted in a stand-alone enclosure that is installed behind the gin stand's control side guard.

If the extractor feeder's feed roller drive features a DC variable-speed motor, an AC motor must be furnished to mount on the existing gear box.

Disclaimer

Depending on the model of feeder and gin, additional items and/or modifications above and beyond the scope of the standard conversion package may be required (at an additional cost).

If a non-Lummus extractor feeder is to be controlled in conjunction with a Lummus gin stand, contact Lummus Engineering to confirm compatibility.



Physical Address: 225 Bourne Boulevard • Savannah, Georgia 31408-9586 USA
 Mailing Address: P. O. Box 929 • Pooler, Georgia 31322-0929 USA
 Phone: (912) 447-9000 • Fax: (912) 447-9250
 Toll Free (USA Only): 1-800-4LUMMUS (1-800-458-6687)
 Web Site: www.lummus.com • E-mail: lummus.sales@lummus.com



Lummus products described or listed in this publication are illustrative only. Application and use of these products must be in accordance with the applicable codes and regulations and must be arranged and/or provided with covers and other guards where necessary to assure the safety of personnel. Lummus engineers continue to make improvements. All designs, specifications, and ratings are subject to change without notice.