

Premier™ III Series Press Console

Latest Controls Technology

The Premier™ III Series press console from Lummus offers a myriad of options for press control. Available as standard equipment on new Lummus Premier™ II and Premier™ III Dor-Les® up-packing presses, along with the Consolidated CUP up-packing press, this controls package can also be furnished as an upgrade on new Lummus Lift-Box Dor-Les® and Consolidated CDP down-packing presses (for an additional cost).

The Premier™ III Series console features a Telemecanique Modicon programmable logic controller (PLC) and a Magelis touch-screen operator interface. The touch-screen interface lends itself to maximum flexibility for control functions, troubleshooting capability, and system monitoring/diagnostics.

And now every new Premier™ III Series console comes equipped with SECOMEA hardware that allows for remote access by authorized personnel for troubleshooting, process monitoring, and program downloading/uploading (facility must have hard-wired internet available to utilize this feature).

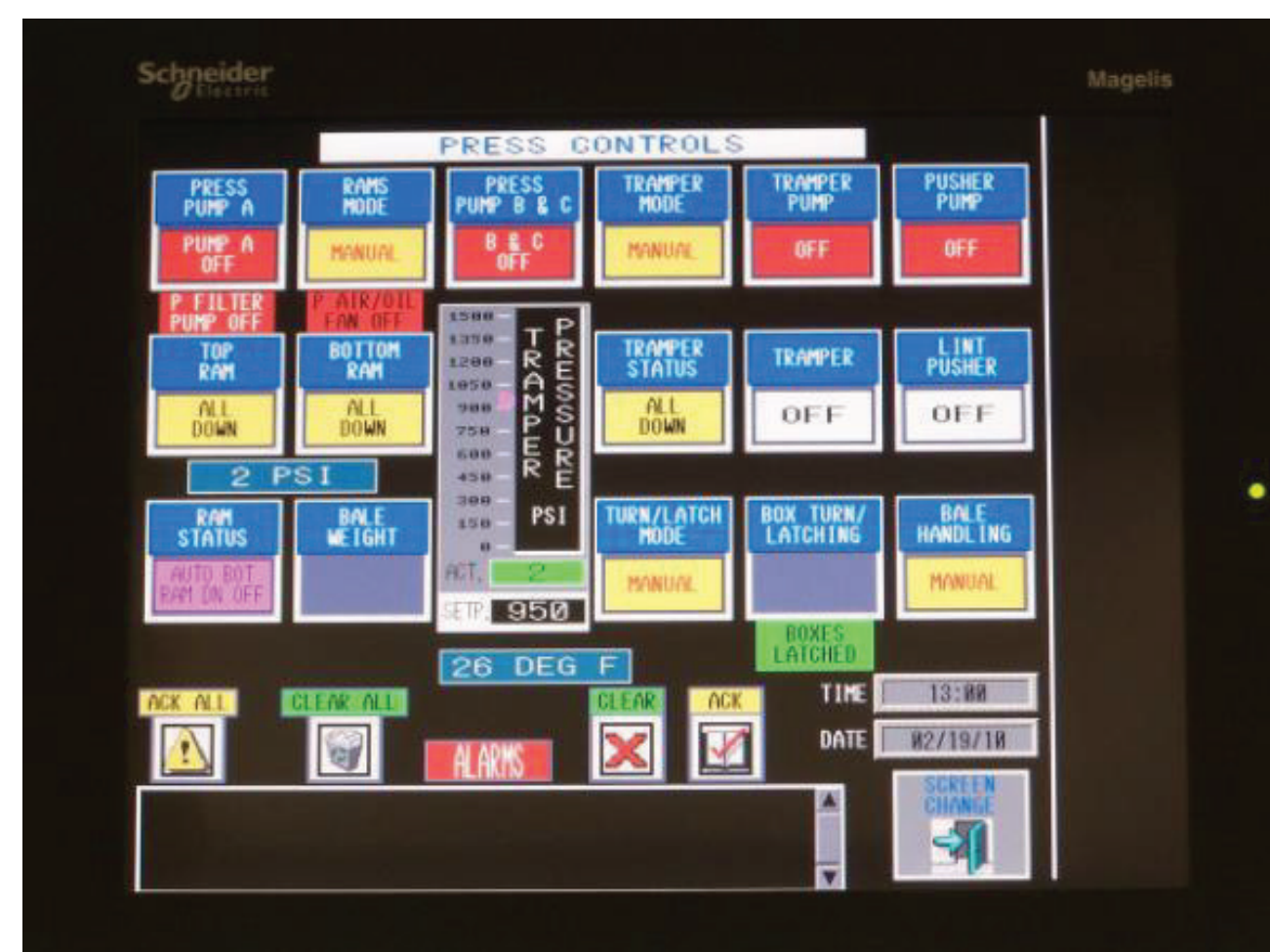


Premier™ III Series Press Console

Retrofit Capability

Perhaps the most ideal attribute of the flexible platform on which the Premier™ III console is designed is that this console can be retrofitted into most existing Lummus and Consolidated bale press systems, whether up-packing or down-packing. Especially beneficial for presses with consoles that were originally equipped with early-model PLC's, whose replacement components have now become (or are becoming) obsolete and difficult to source, the Premier™ III console offers the latest in state-of-the-art control, adaptable to each specific installation.

In the case of older-model Lummus Premier™ Dor-Les® press consoles that featured either a TCP or PanelMate operator interface, the customer can upgrade to a Magelis interface, while continuing to utilize the original console and PLC.



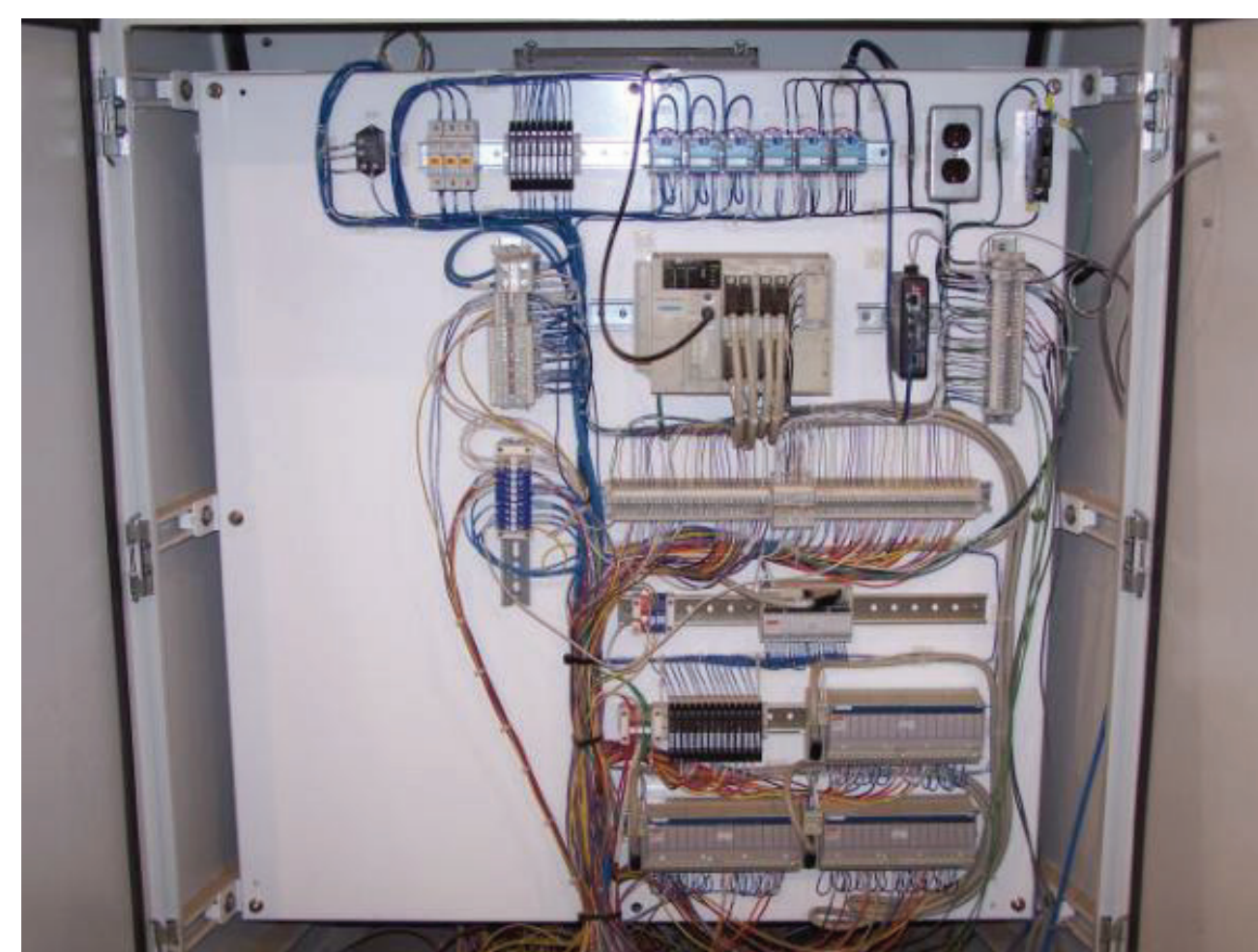
Premier™ III Series Magelis Operator Interface

Standard equipment on the following new presses:

- Lummus Premier™ II and Premier™ III Dor-Les®
- Lummus Lift-Box Dor-Les® (High-Capacity)
- Lummus Lift-Box Dor-Les® (Standard)

Available as a retrofit new console upgrade on:

- Lummus and Consolidated up-packing presses (Premier™ Dor-Les®, E.E. Dor-Les®, Gin Dor-Les®, and CUP)
- Lummus and Consolidated down-packing presses (Lift-Box Dor-Les® and CDP)



Programmable Logic Controller (PLC) and I/O Panel Assembly



Physical Address: 225 Bourne Boulevard • Savannah, Georgia 31408-9586 USA
Mailing Address: P. O. Box 929 • Pooler, Georgia 31322-0929 USA
Phone: (912) 447-9000 • Fax: (912) 447-9250
Toll Free (USA Only): 1-800-4LUMMUS (1-800-458-6687)
Web Site: www.lummus.com • E-mail: lummus.sales@lummus.com



Lummus products described or listed in this publication are illustrative only. Application and use of these products must be in accordance with the applicable codes and regulations and must be arranged and/or provided with covers and other guards where necessary to assure the safety of personnel. Lummus engineers continue to make improvements. All designs, specifications, and ratings are subject to change without notice.